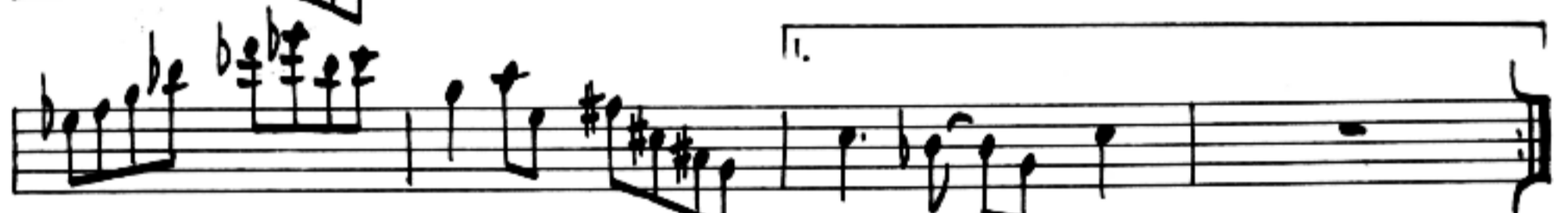


TENOR SAX

MICHAEL BRECKER'S SOLO
x' = ALT. FINGERING

"UP TOWN ED"

Blue Montreux



A handwritten musical score for guitar, consisting of ten staves. The notation includes various rhythmic values, accidentals (sharps, flats, naturals), and articulation marks such as slurs and accents. The score is written in a single system across the ten staves. The first staff begins with a treble clef and a key signature of one flat (B-flat). The music features a mix of eighth and sixteenth notes, often beamed together. There are several instances of triplets, indicated by a '3' below the notes. The score includes dynamic markings like 'p' (piano) and 'f' (forte), as well as phrasing slurs. The notation is clear and legible, typical of a student or hobbyist's manuscript.

"UPTOWN ED"

A handwritten musical score consisting of ten staves of music. The notation includes various rhythmic values, accidentals (sharps, flats, naturals), and articulation marks. The first staff begins with a treble clef and a key signature of one flat. The music features a mix of eighth and sixteenth notes, often beamed together. There are several triplets and slurs throughout the piece. The notation is dense and appears to be a working draft or a personal manuscript.

"UPTOWN ED"

A handwritten musical score consisting of ten staves of music. The notation includes various rhythmic values, accidentals (sharps, flats, naturals), and articulation marks such as slurs and accents. A triplet of eighth notes is marked with a '3' in a circle in the first staff. The music is written in a single system across the staves, with some notes beamed together. The overall style is that of a personal musical sketch or a working draft.

"UPTOWN ED"